

2022



Mayor
& Board of Trustees

Mayor Michael Mahoney
720-421-7446
mmahoney@lochbuie.org

Mayor Pro-Tem David Ott
303-656-6636
dott@lochbuie.org

Trustee Jacklyn White
303-330-2323
jwhite@lochbuie.org

Trustee Jamie Jeffery
jjeffery@lochbuie.org

Trustee May Wescott
mwescott@lochbuie.org
720-523-3132

Trustee Jeremy Kovinchick
jkovinchick@lochbuie.org

Trustee Dawn Coen
dcoen@lochbuie.org
720-909-3151

Town Hall Phone: 303-655-9308

Monday—Thursday
7 am—6 pm

Police Department: 303-659-1395

Monday—Friday
8 am—5 pm

After hours Public Works:
303-990-5327

www.lochbuie.org

Follow us on Facebook!



- ♦ **REMINDERS:** Delinquent payments are due by 1/04/2022 to avoid shut off on 1/5/2022. Payment arrangements may be available. Contact Town Hall for more information.

TEMPORARY ROAD CLOSURE

A temporary roadway closure of Weld County Road 2 (aka Baseline or East 168th Avenue) between North 60th Avenue and King Street. This closure is facilitated by the need to demolish and reconstruct the existing bridge over the Speer Canal.

The temporary closure is currently scheduled to begin January , 2021 and will finish on March 16 2022. During that time, the roadway will be closed twenty-four (24) hours per day. Throughout the closure, traffic will be detoured on surrounding arterial streets and therefore we kindly ask that you please follow all posted detour signage.

An exhibit depicting the detour route and signage has been provided on page 3 of this newsletter for reference.

SNOW REMOVAL REMINDER!

During light snowfalls of 2 inches or less, spot treating of roads will be done on all designated routes and in certain icy areas on non-designated roads (controlled intersections or significant elevation changes). If snowfall is predicted to exceed 2 inches, Town crews will plow and treat primary routes beginning when 2 inches have accumulated. The Town uses de-icing materials (no salt or sand) for road treatments. See the complete map and list of priority streets/routes on our website at: www.lochbuie.org

Note: According to Town Code, "residents have 24 hours after snow has ended to shovel walkways in front of their homes".

PLEASE DO NOT BECOME A VICTIM OF VEHICLE

THEFT!

With cooler weather upon us, law enforcement would like to remind all residents that leaving your car running unattended in the driveway or on the street is an invitation to car thieves.

The Colorado Low-income Energy Assistance Program (LEAP) is a federally funded program that helps eligible hard-working Colorado families, seniors and individuals pay a portion of their winter home heating costs. Our goal is to help bring warmth, comfort and safety to your home and family by assisting with heating costs.

The LEAP program works to keep communities warm during the winter (November through April) by providing assistance with heating costs, equipment repair and/or replacement of inoperable heating tools. While the program is not intended to pay the entire cost of home heating, we aim to help alleviate some of the burdens that come with Colorado's colder months.

In most cases, the energy assistance benefit is paid directly to the household energy supplier. In most cases, if you are approved for LEAP, payments are made directly to your primary heating fuel vendor and a notice will be sent to you informing you of the benefit amount. Other benefits provided by LEAP include repair or replacement of a home's primary heating system, such as a furnace or wood-burning stove. The program does not provide financial assistance for any type of temporary or portable heating.

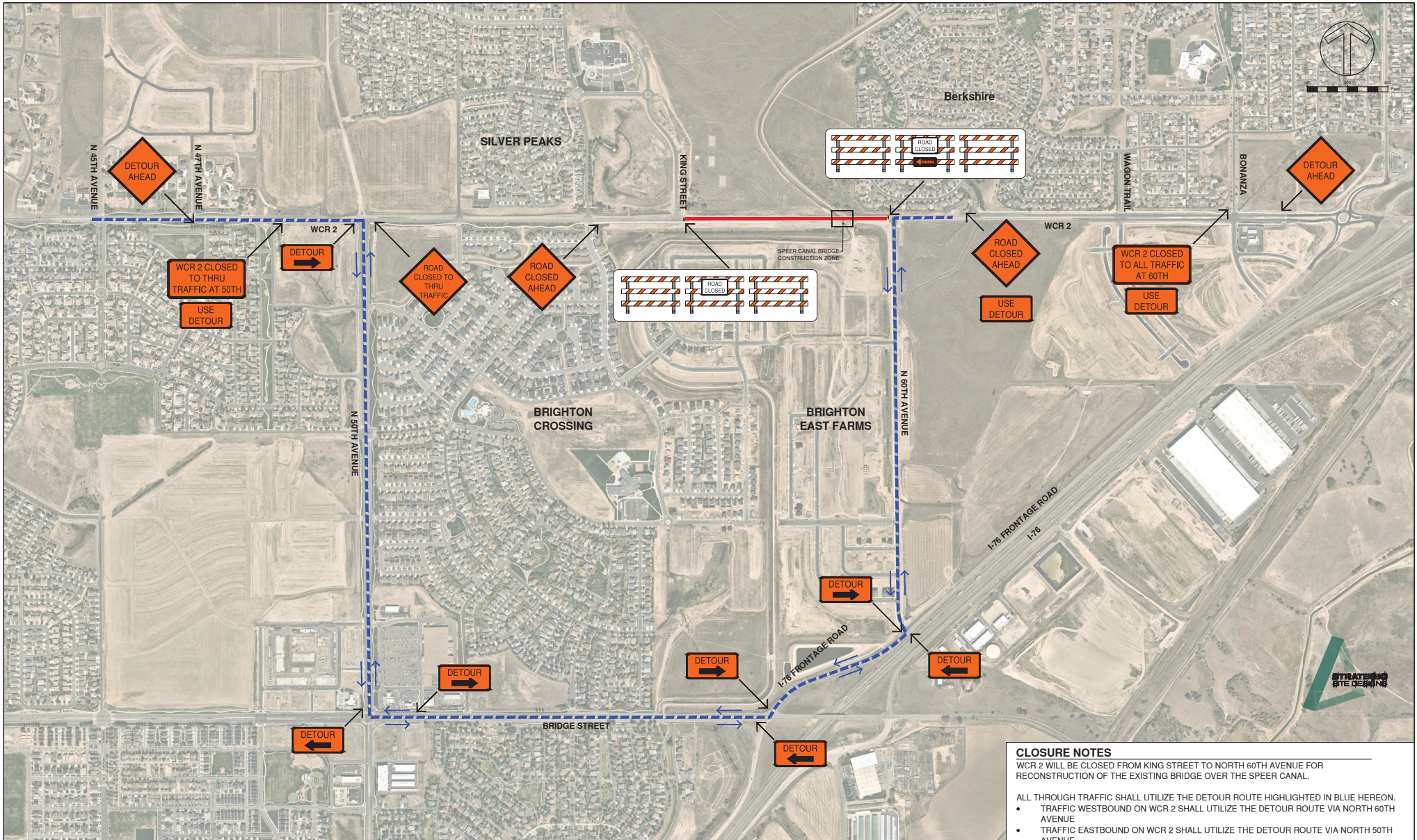
If this program interests you, please call 1-866-HEAT-HELP (1-866-432-8435) for more information.

<https://cdhs.colorado.gov/leap>



JANUARY

Sun	Mon	Tue	Wed	Thu	Fri	Sat
						1
2	3	#Cancelled Town Board Meeting 6:30 PM	5 WATER SHUT OFF	6	7	8
9	10 Recycle	11	12	13	14	15
16	17 Utility Bills Due	18 Town Board Meeting 6:30 PM	19	20	21	22
23	24 Recycle	25 Court at 8:30 am	26	27	28	29
30	31					



WCR 2 AND SPEER CANAL CROSSING ROADWAY CLOSURE AND DETOUR ROUTE

CLOSURE LEGEND
 ROAD CLOSED
 DETOUR ROUTE

CLOSURE NOTES

WCR 2 WILL BE CLOSED FROM KING STREET TO NORTH 60TH AVENUE FOR RECONSTRUCTION OF THE EXISTING BRIDGE OVER THE SPEER CANAL.

- ALL THROUGH TRAFFIC SHALL UTILIZE THE DETOUR ROUTE HIGHLIGHTED IN BLUE HEREON.
- TRAFFIC WESTBOUND ON WCR 2 SHALL UTILIZE THE DETOUR ROUTE VIA NORTH 60TH AVENUE
- TRAFFIC EASTBOUND ON WCR 2 SHALL UTILIZE THE DETOUR ROUTE VIA NORTH 50TH AVENUE

THE CLOSURE IS SCHEDULED TO BEGIN ON MONDAY, JANUARY 4TH AND IS ANTICIPATED TO LAST UNTIL MONDAY, MARCH 15TH.

FOR ADDITIONAL INFORMATION, PLEASE CALL THE TOWN OF LOCHBUIE PUBLIC WORKS AT (303) 990-5328



Town of Lochbuie 2022 Recycling Calendar



January

S	M	T	W	TH	F	S
						1
2	3	4	5	6	7	8
9	10	11	12	13	14	15
16	17	18	19	20	21	22
23	24	25	26	27	28	29
30	31					

February

S	M	T	W	TH	F	S
		1	2	3	4	5
6	7	8	9	10	11	12
13	14	15	16	17	18	19
20	21	22	23	24	25	26
27	28					

March

S	M	T	W	TH	F	S
		1	2	3	4	5
6	7	8	9	10	11	12
13	14	15	16	17	18	19
20	21	22	23	24	25	26
27	28	29	30	31		

April

S	M	T	W	TH	F	S
					1	2
3	4	5	6	7	8	9
10	11	12	13	14	15	16
17	18	19	20	21	22	23
24	25	26	27	28	29	30

Recycle (Clean & Dry):



Aluminum & Steel Cans



Glass Bottles & Jars



Paper



Plastic Bottles, Jugs & Jars



Cardboard & Boxboard

May

S	M	T	W	TH	F	S
1	2	3	4	5	6	7
8	9	10	11	12	13	14
15	16	17	18	19	20	21
22	23	24	25	26	27	28
29	30	31				

June

S	M	T	W	TH	F	S
			1	2	3	4
5	6	7	8	9	10	11
12	13	14	15	16	17	18
19	20	21	22	23	24	25
26	27	28	29	30		

July

S	M	T	W	TH	F	S
					1	2
3	4	5	6	7	8	9
10	11	12	13	14	15	16
17	18	19	20	21	22	23
24	25	26	27	28	29	30
31						

August

S	M	T	W	TH	F	S
	1	2	3	4	5	6
7	8	9	10	11	12	13
14	15	16	17	18	19	20
21	22	23	24	25	26	27
28	29	30	31			

Do NOT Recycle:*

- Plastic bags, wrap, film (return bags to store)
- Food, liquids
- Yard waste, wood
- Shredded paper
- Electronics
- Clothes, bedding, carpet
- Medical/hazardous waste
- Foam cups, take-out containers, packing material

* Items are not limited to those above.

September

S	M	T	W	TH	F	S
				1	2	3
4	5	6	7	8	9	10
11	12	13	14	15	16	17
18	19	20	21	22	23	24
25	26	27	28	29	30	

October

S	M	T	W	TH	F	S
						1
2	3	4	5	6	7	8
9	10	11	12	13	14	15
16	17	18	19	20	21	22
23	24	25	26	27	28	29
30	31					

November

S	M	T	W	TH	F	S
		1	2	3	4	5
6	7	8	9	10	11	12
13	14	15	16	17	18	19
20	21	22	23	24	25	26
27	28	29	30			

December

S	M	T	W	TH	F	S
					1	2
3	4	5	6	7	8	9
10	11	12	13	14	15	16
17	18	19	20	21	22	23
24	25	26	27	28	29	30
31						

Service Day Guidelines

- Trash and recycling will be picked up on Mondays. Recycling will be collected every two weeks (green). On your service day, place your carts at the curb by 6 a.m. with the wheels facing the curb.
- Please ensure all material fits in your carts with the lid closed.
- Do not bag your recyclables.

Service Holidays

Memorial Day	Monday, May 30
Independence Day	Monday, July 4
Labor Day	Monday, Sept. 5
Thanksgiving Day	Thursday, Nov. 24

If your service day falls on or after a holiday, your service will be delayed by one (1) day. Regular service resumes the following week.

QUESTIONS? Please call WM Customer Service at (303) 797-1600.