

Town of Lochbuie Newsletter January 2021



Mayor & Board of Trustees

Mayor Michael Mahoney

720-421-7446

mmahoney@lochbuie.org

Mayor Pro-Tem David Ott

303-655-1210

dott@lochbuie.org

Trustee Jacklyn White

303-330-2323

jwhite@lochbuie.org

Trustee Solara Antonopulos

santonopulos@lochbuie.org

Trustee Jamie Jeffery

jjeffery@lochbuie.org

Trustee May Wescott

mwescott@lochbuie.org

720-523-3132

Trustee James Kuemmerle

jkuemmerle@lochbuie.org

412-612-0497

Town Hall Phone: 303-655-9308

Police Department: 303-659-1395

After hours Public Works:

303-990-5327

www.lochbuie.org

Follow us on Facebook!



MAYOR'S CORNER

Well, we made it to the new year! It was a trying and crazy 2020. I hope the new year finds you all with good spirits and a hopeful outlook for things to come.

I would like to thank all those that got out and voted. Your voice is necessary and does make a difference.

We have a lot of great things to look forward to in Lochbuie in the coming year. Road 2 widening is most definitely continuing. January 4th the bridge work will begin and the rest of road two construction will follow.

I am happy to say your new board is in place and is ready and fired up to move our city forward. I would truly like to thank the citizens for your support and let's make 2021 a better year and hopefully coronavirus free.

Sincerely,

Mayor Michael Mahoney

TEMPORARY ROAD CLOSURE

A temporary roadway closure of Weld County Road 2 (aka Baseline or East 168th Avenue) between North 60th Avenue and King Street. This closure is facilitated by the need to demolish and reconstruct the existing bridge over the Speer Canal.

The temporary closure is currently scheduled to begin January 4, 2021 and will finish on March 15, 2021. During that time, the roadway will be closed twenty-four (24) hours per day. Throughout the closure, traffic will be detoured on surrounding arterial streets and therefore we kindly ask that you please follow all posted detour signage.

An exhibit depicting the detour route and signage has been provided on page 3 of this newsletter for reference.



The Town Hall Administrative services and Public Works hours will be **Monday through Thursday from 7:00 a.m. to 6:00 p.m.** Town Administration will be closed on Fridays. Police will continue to operate under the current schedule of 8am-5pm, M-F. While the Town Hall will be closed on Fridays the hours have been extended for citizens, businesses and other customers from Monday through Thursday.

SNOW REMOVAL REMINDER!

During light snowfalls of 2 inches or less, spot treating of roads will be done on all designated routes and in certain icy areas on non-designated roads (controlled intersections or significant elevation changes). If snowfall is predicted to exceed 2 inches, Town crews will plow and treat primary routes beginning when 2 inches have accumulated. The Town uses de-icing materials (no salt or sand) for road treatments. See the complete map and list of priority streets/routes on our website at:

www.lochbuie.org

Note: According to Town Code, "residents have 24 hours after snow has ended to shovel walkways in front of their homes".

Friendly Reminder - Sewer Rate Calculation

Your sewer rate is calculated using the average metered water usage from your December 20 read date to the March 20 read date. Be sure to fix leaks as soon as you notice them. Common types of leaks include worn toilet flappers, dripping faucets and showerheads.

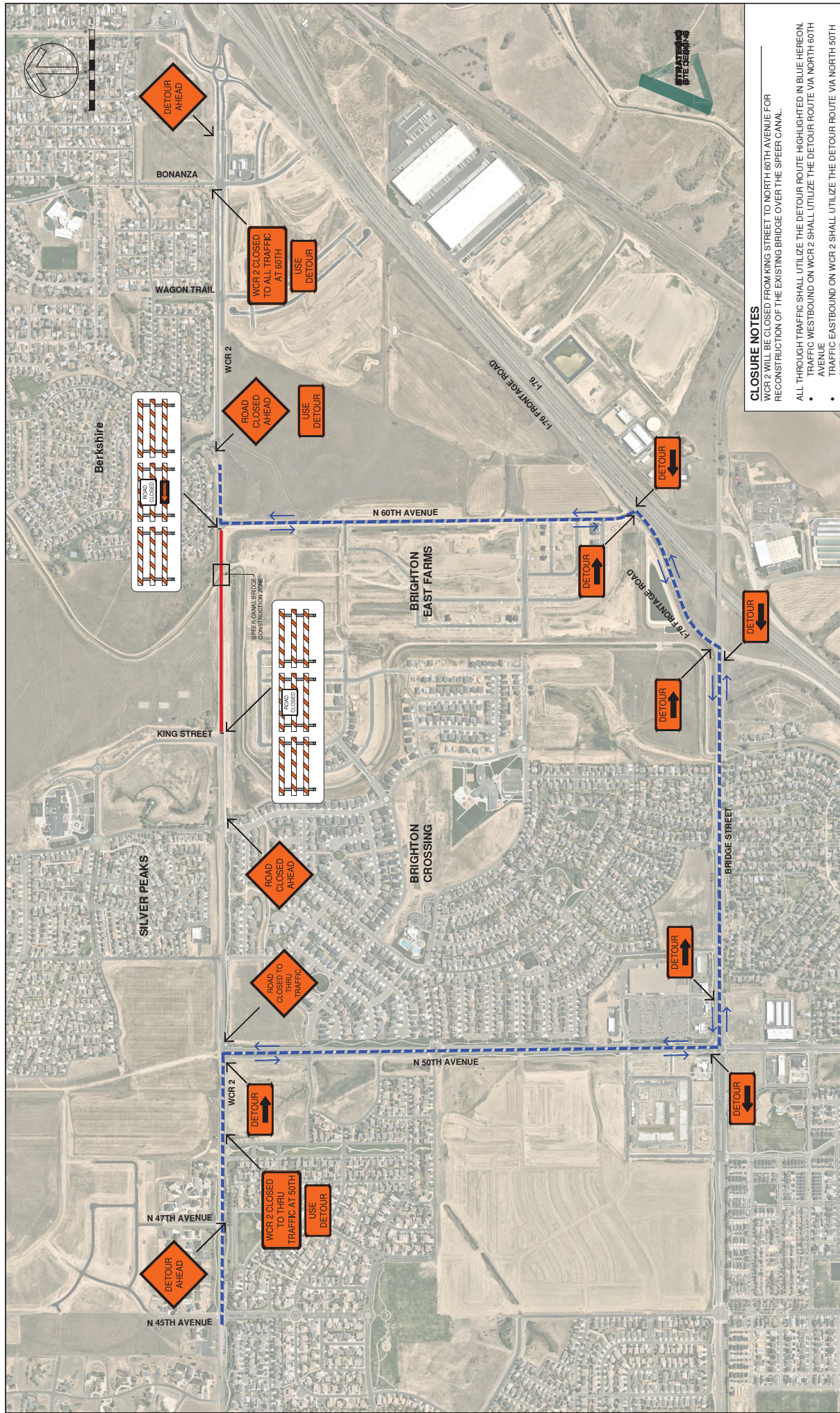
PLEASE DO NOT BECOME A VICTIM OF VEHICLE THEFT!

With cooler weather upon us, law enforcement would like to remind all residents that leaving your car running unattended in the driveway or on the street is an invitation to car thieves.



Sun Mon Tue Wed Thu Fri Sat

					1	2
3	4	5 Town Board Meeting 6:30 PM	6 	7	8	9
10	11 	12	13 Town Board Training 6:30 PM	14	15	16
17	18 Utility Bills Due	19 Town Board Meeting 6:30 PM	20	21	22	23
24	25 	25 Court 8:30 AM Town Board Training 6:30 PM	27	28	29	30
31						



CLOSURE NOTES
 WCR 2 WILL BE CLOSED FROM KING STREET TO NORTH 60TH AVENUE FOR RECONSTRUCTION OF THE EXISTING BRIDGE OVER THE SPEER CANAL.
 ALL THROUGH TRAFFIC SHALL UTILIZE THE DETOUR ROUTE HIGHLIGHTED IN BLUE HEREON.
 • TRAFFIC WESTBOUND ON WCR 2 SHALL UTILIZE THE DETOUR ROUTE VIA NORTH 60TH AVENUE
 • TRAFFIC EASTBOUND ON WCR 2 SHALL UTILIZE THE DETOUR ROUTE VIA NORTH 50TH AVENUE

THE CLOSURE IS SCHEDULED TO BEGIN ON MONDAY, JANUARY 4TH AND IS ANTICIPATED TO LAST UNTIL MONDAY, MARCH 15TH.
 FOR ADDITIONAL INFORMATION, PLEASE CALL THE TOWN OF LOCHBUE PUBLIC WORKS AT (903) 990-5328

CLOSURE LEGEND
 — ROAD CLOSED
 - - - - - DETOUR ROUTE

WCR 2 AND SPEER CANAL CROSSING ROADWAY CLOSURE AND DETOUR ROUTE



Lochbuie 2021 Recycling Calendar



January

S	M	T	W	Th	F	S
					1	2
3	4	5	6	7	8	9
10	11	12	13	14	15	16
17	18	19	20	21	22	23
24	25	26	27	28	29	30
31						

February

S	M	T	W	Th	F	S
	1	2	3	4	5	6
7	8	9	10	11	12	13
14	15	16	17	18	19	20
21	22	23	24	25	26	27
28						

March

S	M	T	W	Th	F	S
	1	2	3	4	5	6
7	8	9	10	11	12	13
14	15	16	17	18	19	20
21	22	23	24	25	26	27
28	29	30	31			

April

S	M	T	W	Th	F	S
				1	2	3
4	5	6	7	8	9	10
11	12	13	14	15	16	17
18	19	20	21	22	23	24
25	26	27	28	29	30	

May

S	M	T	W	Th	F	S
						1
2	3	4	5	6	7	8
9	10	11	12	13	14	15
16	17	18	19	20	21	22
23	24	25	26	27	28	29
30	31					

June

S	M	T	W	Th	F	S
		1	2	3	4	5
6	7	8	9	10	11	12
13	14	15	16	17	18	19
20	21	22	23	24	25	26
27	28	29	30			

July

S	M	T	W	Th	F	S
				1	2	3
4	5	6	7	8	9	10
11	12	13	14	15	16	17
18	19	20	21	22	23	24
25	26	27	28	29	30	31

August

S	M	T	W	Th	F	S
1	2	3	4	5	6	7
8	9	10	11	12	13	14
15	16	17	18	19	20	21
22	23	24	25	26	27	28
29	30	31				

September

S	M	T	W	Th	F	S
			1	2	3	4
5	6	7	8	9	10	11
12	13	14	15	16	17	18
19	20	21	22	23	24	25
26	27	28	29	30		

October

S	M	T	W	Th	F	S
					1	2
3	4	5	6	7	8	9
10	11	12	13	14	15	16
17	18	19	20	21	22	23
24	25	26	27	28	29	30
31						

November

S	M	T	W	Th	F	S
	1	2	3	4	5	6
7	8	9	10	11	12	13
14	15	16	17	18	19	20
21	22	23	24	25	26	27
28	29	30				

December

S	M	T	W	Th	F	S
			1	2	3	4
5	6	7	8	9	10	11
12	13	14	15	16	17	18
19	20	21	22	23	24	25
26	27	28	29	30	31	

Recycle (Clean & Dry):



Aluminum & Steel Cans



Plastic Bottles, Jugs & Jars



Glass Bottles & Jars



Paper



Cardboard & Boxboard

Do NOT Recycle:*

- Plastic bags, wrap or film (return bags to store)
- Food, liquids
- Yard waste, wood
- Shredded paper
- Electronics
- Clothes, bedding, carpet
- Medical/hazardous waste
- Foam cups, take-out containers, packing material

* Items are not limited to those above.

Service Day Guidelines

- Trash and recycling will be picked up on Mondays. Recycling will be collected every two weeks (green).
- On your service day, place your carts at the curb by 6 a.m. with the wheels facing the curb.
- Please ensure recyclables fit in your recycling cart with the lid closed.
- Do not bag your recyclables.

Service Holidays

- | | |
|--------------------|-------------------|
| • New Year's Day | Friday, Jan. 1 |
| • Memorial Day | Monday, May 31 |
| • Independence Day | Sunday, July 4 |
| • Labor Day | Monday, Sept. 6 |
| • Thanksgiving Day | Thursday, Nov. 25 |
| • Christmas Day | Saturday, Dec. 25 |

Holidays noted with a square may affect your collection service. If your service day falls on or after a holiday, your service will be delayed by one (1) day. Regular service will resume the following week. Service will not be delayed if the holiday falls on a Sunday.

QUESTIONS? Call (303) 797-1600.